



Wear-Bonded™ Comfort-King™ is the ideal ergonomic solution for people seeking comfort and long-term durability!

- Stimulates muscles and blood flow to reduce fatigue
- As an Ergonomic Collection mat, this product will give you maximum comfort and durability
- Unique Wear-Bonded™ process reduces the possibility for product separation

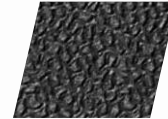
WEAR-BONDED™ COMFORT-KING™ APPLICATIONS

Provide a medium duty solution for dry areas e.g.: Work Station, Pick Module, Cashier Station, Assembly Line

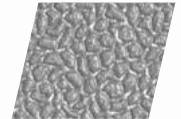
FEATURES

- Highly energized [Zedlan™](#) sponge combines softness, resilience and durability for exceptional relief
- Exclusive Fusion technology molecularly bonds layers together without the use of adhesives
- Durable abrasion-resistant vinyl surface

Compare [Wear-Bonded™ Comfort-King™](#) to other Crown products:



BLACK



STEEL GRAY

AVAILABILITY		TECHNICAL DATA	PROFILE
MATS 2' X 3' 3' X 5' 3' X 12'	ROLLS 2' X 60' 3' X 60' 4' X 60'	Description: Zedlan foam top surface bonded to Zedlan foam Compression: 18 @ 7 psi per ASTM D-1667 Tabor Abrasion: ≤.25% per ASTM D 4060 Flammability: DOC FF 1-70 Electrical Properties: Foam 10 ⁹ ohms per sq. ASTM D-257-93 Weight: 6.8 lbs per sq. yd.	 Thickness: 1/2"
CUSTOM CUTS		WARRANTY	
Available		 TOTAL CONFIDENCE WARRANTY	
USE AND CARE			
Damp mop			

Click or scan code for short video



AUTHORIZED DISTRIBUTOR

