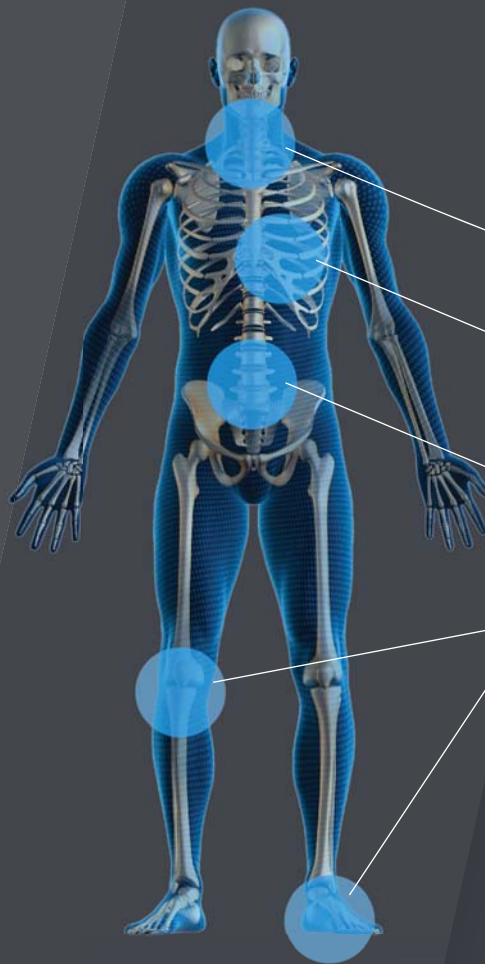


HOW DOES ANTI-FATIGUE WORK?

Anti-fatigue matting reduces fatigue for those who work in a standing position by providing a balance of “softness” and “support”. In addition, it offers a safe, non-slip surface that greatly reduces the risk of falls.

Softness: allows proper weight distribution while reducing the impact on the joints, allowing a more natural position and reducing stress on pressure points.

Support: provides resilience and bounce. As the worker’s foot presses into the mat, the matting pushes back against the foot enabling a flow of return energy to the worker and prevents blood from stagnating.



- Relieve tightened muscles
- Increase blood flow from compressed blood vessels
- Reduce stress on spine and back resulting from static movements
- Relieve stress on knee, foot and ankle joint pressure points resulting from long standing



In our 68 years of expertise in the field of anti-fatigue mats, we have developed a technology exceeding the standards required for industrial workers. This technology is Zedlan™ - a substance so extraordinary and comfortable that we have patented it (patent # 5,965,650)

Our Zedlan products offer incomparable advantages:

- **More energy!** Zedlan™ sponge has three times the bounce of traditional anti-fatigue products
- **More durable!** Zedlan™ sponge outwears similar products by nearly three to one
- **Less slips and falls!** Zedlan™ sponge offers superior traction compared to regular foam products
- **Extreme flexibility!** Zedlan™ sponge will keep its anti-fatigue property, even under freezing temperatures
- **Natural anti-static!** Unlike other sponge products, Zedlan™ offers natural resistivity of 10^9 ohms per square

NOW THAT YOU KNOW: INSIST ON ZEDLAN™ AND GET MORE BOUNCE FOR YOUR BUCK!